

FileMaker Pro 5.5

Getting Started with FileMaker Pro in Mac OS X



© 2001 FileMaker, Inc. All rights reserved. FileMaker is a trademark of FileMaker, Inc., registered in the U.S. and other countries. All other trademarks are the property of their respective owners. Mention of third party products and companies is for informational purposes only and does not constitute an endorsement or recommendation.

Contents

Getting started with FileMaker Pro in Mac OS X

Installing FileMaker Pro	1
System requirements	1
Easy installation	2
Custom installation	3
Where files are stored on your hard disk	5
Adjusting the FileMaker Pro cache	8
Using FileMaker Pro 5.5 in Mac OS X	9
Menu location changes	9
Keyboard command changes	10
Design and functionality changes	11
Status function changes	11
Features not supported in FileMaker Pro 5.5 for Mac OS X	11
Features with different requirements	12
Enabling the FileMaker Pro Web Companion in Mac OS X	12
Configuring the Web Companion for use with ports 1024 and higher	14
Accessing databases that are published to the Web	16
Using FileMaker Pro 5.5 Help in Mac OS X	16

Getting started with FileMaker Pro in Mac OS X

This document gives you information on installing and using FileMaker Pro 5.5 in Mac OS X. For new feature information and instructions on installing FileMaker Pro 5.5 on other platforms, see the *FileMaker Pro 5.5 Getting Started Guide*.

Important The FileMaker Pro 5.5 for Mac OS X application is intended for use with Mac OS X only. It will not run under Mac OS 9.x or earlier.

Installing FileMaker Pro

Before you begin the installation process, quit other open programs and save your work. You must use the installation program to install FileMaker Pro in Mac OS X—you can't install the application by dragging files to your hard disk.

System requirements

- Apple PowerMac G3 or higher (standard configurations, CPU upgrade cards are not supported)
- 128 MB of RAM

Note These RAM requirements are necessary to install Mac OS X. Because Mac OS X dynamically allocates RAM to open applications as needed, the amount of RAM actually used by FileMaker Pro is automatically assigned by the system.

- a hard disk with at least 1.5 GB of free space (for Mac OS X installation); 35 MB needed for FileMaker Pro installation
- monitor with a minimum of 800 x 600 resolution at 16 bit color; monitor with 1024 x 768 or higher resolution recommended
- a CD or DVD drive
- Mac OS X (official software release; the Mac OS X “Public Beta” release is not supported)

To start the FileMaker Pro Installer:

1. Insert the CD into your CD or DVD drive.

You see the disc's window on your screen. If you see only the disc icon, double-click the icon to open its window.

2. Double-click the file named Start Here Mac OS X.

You see the software license agreement.

3. Click Accept if you accept the terms of the license agreement.

You see the FileMaker Pro Installer dialog.

4. Follow the steps described in one of the following sections:

- If you want to install all the available files, continue with “Easy installation.”
- If you want to install a subset of the FileMaker Pro files, skip to “Custom installation” on page 3.

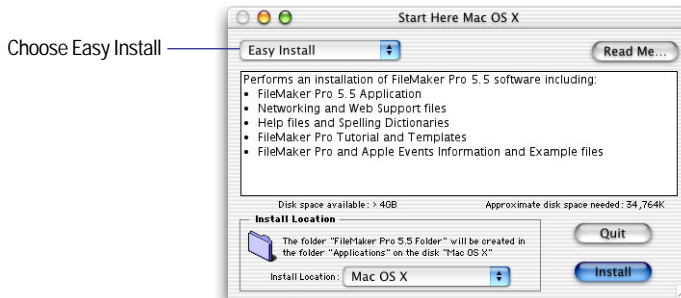
Easy installation

Follow these steps to install the complete FileMaker Pro package on your hard disk.

To install FileMaker Pro on your hard disk:

1. If you have not done so already, start the Installer.

You see the FileMaker Pro 5.5 Installer dialog.



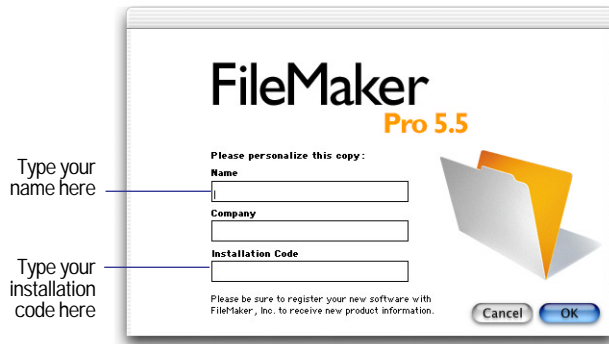
2. Specify the installation location, or use the default location.

- If you want to install FileMaker Pro in a folder other than the default, choose Select Folder from the bottom of the Install Location pop-up menu and select the desired folder.
- If you’re logged in with an administrator password and you install FileMaker Pro into the default Applications folder, users who log in with a non-administrator password will not be able to access the FileMaker Pro template or tutorial files. If non-administrator users need to access these files, perform a Custom Install and install these files into the User’s Application folder.
- If you choose a disk or volume that doesn’t have enough free disk space or is locked, the Install button is dimmed and the dialog tells you why you can’t install onto that disk. If the selected disk doesn’t have enough space for the files you select, you can switch to the Finder software, and delete existing files to make more room on the disk. You can also choose not to install some files (like the tutorial or template files) by selecting Custom Install from the pop-up menu. For more information, see the next section.

Note For late-breaking information about FileMaker Pro, browse the contents of the CD and view the Read Me.txt file or visit www.filemaker.com.

3. Click Install.

You see the personalization dialog.



4. In the Name box, type your name and press the Tab key.

5. Type your company name, if applicable, and press Tab.

If you don't have a company name, you can put other information (for example, your address) in the box or leave it blank.

6. Type your FileMaker Pro installation code.

The installation code is a seventeen-digit number located on a multi-part label on a separate paper sheet within the box.

Important You must enter the installation code during installation or the software will not install.

Check your typing carefully. After you click OK, you can't change the name, company, or installation code unless you reinstall FileMaker Pro.

7. Click OK.

The Installer begins copying files. After all the files are installed, a dialog shows your registration options. A final dialog tells you the installation on your hard disk was successful.

8. Click Quit to leave the Installer.

Custom installation

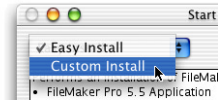
To install a subset of FileMaker Pro files on your hard disk:

1. If you have not already done so, start the Installer, as described on page 1.

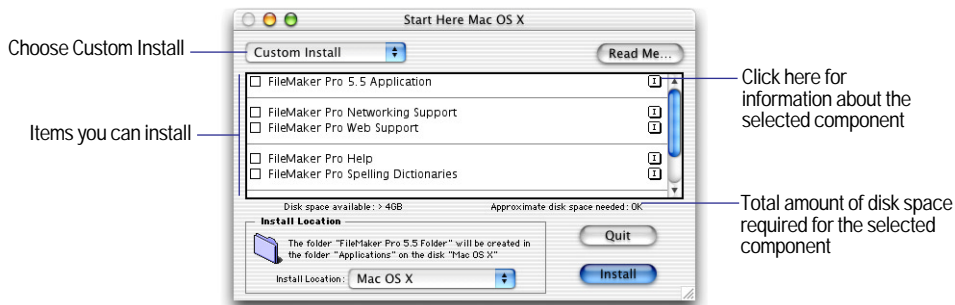
4 Getting started with FileMaker Pro in Mac OS X

You see the FileMaker Pro Installer dialog.

2. Choose Custom Install from the pop-up menu.



The dialog lists the components you can install.



3. Select the components you want to install by selecting the checkboxes.
4. Specify the installation location, or use the default location.
 - If you want to install FileMaker Pro or the specified files in a folder other than the default, choose Select Folder from the Install Location pop-up menu and select the desired folder.
 - If you choose a disk or volume that doesn't have enough free disk space or is locked, the Install button is dimmed and the dialog tells you why you can't install onto that disk. If the selected disk doesn't have enough space for the files you select, you can switch to the Finder software, and delete existing files to make more room on the disk. You can also choose not to install some files (like the tutorial or template files) by deselecting those files in the scrolling list.
5. Click Install.

If you've selected the application, you see the Personalize dialog.
6. In the Name box, type your name and press the Tab key.
7. Type your company name, if applicable, and press Tab.

If you don't have a company name, you can put other information (for example, your address) in the box or leave it blank.
8. Type your FileMaker Pro installation code.

The installation code is a seventeen-digit number located on a multi-part label on a separate paper sheet within the box.

Important You must enter the installation code during installation or the software will not install.

Check your typing carefully. After you click OK, you can't change the name, company, or installation code unless you reinstall FileMaker Pro.

9. Click OK.

The Installer begins copying files. After the selected files are installed, a dialog shows your registration options. A final dialog tells you the installation on your hard disk was successful.

10. Click Quit to leave the Installer.

Where files are stored on your hard disk

The following table shows the files and folders you can install, and the preferred location for them on your hard disk. If you install onto the current system disk, the FileMaker Pro Installer places all the files you need in their preferred locations.

Because FileMaker Pro 5.5 for Mac OS X uses the Mac OS X Application Package feature, some FileMaker Pro files and folders that were previously visible to you are now stored in the FileMaker Pro 5.5 package. This means that the application folder with the application and all auxiliary files appears as a single icon, which can be started as if it is the actual application.

FileMaker Pro 5.5 Folder	File or folder	Description
	FileMaker Pro	The FileMaker Pro 5.5 application package
	Read Me.txt	Late-breaking news about FileMaker Pro
	FileMaker on the Web	An HTML file that points the web browser software to the FileMaker, Inc. web site (Internet connection and web browser software required)
	FileMaker Registration	An application for registering FileMaker Pro via the internet, fax, or mail
FileMaker Extensions	Auto Update X	Plug-in that allows FileMaker Pro 5.5 to download plug-in updates from FileMaker Server 5.5
	claddon.clr	An additional dictionary that contains computer terminology
	DBF	DBF import filter
	Excel	Microsoft Excel import filter
	Language Modules	Language Module folder for Web Companion
	Local Data Access Companion	Companion plug-in that enables local ODBC access to FileMaker Pro

FileMaker Pro 5.5 Folder	File or folder	Description
	Remote Data Access Companion	Companion plug-in that enables remote ODBC access to FileMaker Pro
	TCP/IP OT Network	Module that supports the TCP/IP network
	UKENGLSH.MPR	UK Spelling dictionary
	USEENGLSH.MPR	US Spelling dictionary
	USER.UPR	Spelling dictionary containing words added by the user
	Web Companion	The FileMaker Web Companion plug-in that enables web publishing from FileMaker Pro
	Web Companion Enabler	A component necessary for Web Companion port configuration in Mac OS X
FileMaker and Apple Events	Apple Events Reference	Apple events reference database
	Syntax Examples	Syntax Examples folder
	Sample Applications	Sample Applications folder
FileMaker Tutorial	Tutorial ReadMe.txt	Text document containing information about the tutorial
	Sample Files	Folder containing sample files to use with the FileMaker Pro tutorial
	Working Files	Folder containing lesson files to use with the FileMaker Pro tutorial
Web	default.htm	HTML document with information about web publishing with FileMaker Pro 5.5
Web Security	Databases	Folder containing the FileMaker Pro databases required to use Web Security Database safeguards
	Security	Folder containing the HTML files required to use Web Security Database safeguards
	WebSecurity.pdf	An Adobe Acrobat document containing information about data security on the Web
FMI	Go_FileMaker.html	HTML file that points web browser software to the FileMaker, Inc. web site (Internet connection and web browser software required)
	FMI Logo.gif	FileMaker, Inc. logo

FileMaker Pro package contents

To view the contents of the FileMaker Pro package, Control-click the FileMaker Pro application icon, and choose Show package contents.

Contents folder	File or folder	Description
	Info-macos.plist	Info about the package for the operating system
	PkgInfo	Info about the package for the operating system
MacOS	FileMaker Pro	FileMaker Pro application
	FMPHelp Contexts	Context mapping for FileMaker Pro Help
MacOS/Themes	Aqua.fth	FileMaker Pro layout theme
	Blue_gold.fth	FileMaker Pro layout theme
	Brick.fth	FileMaker Pro layout theme
	Citrus.fth	FileMaker Pro layout theme
	Fern_green.fth	FileMaker Pro layout theme
	Hc_Black.fth	FileMaker Pro layout theme
	Hc_pumpkin.fth	FileMaker Pro layout theme
	Hc_White.fth	FileMaker Pro layout theme
	Lavender.fth	FileMaker Pro layout theme
	Ocean_blue.fth	FileMaker Pro layout theme
	Softgray.fth	FileMaker Pro layout theme
	Teal.fth	FileMaker Pro layout theme
	Wheat.fth	FileMaker Pro layout theme
	Windows_standard.fth	FileMaker Pro layout theme
MacOS/Labels	LabelsUS.flb	FileMaker Pro labels module
	LabelsAus.flb	FileMaker Pro labels module
	LabelsUK.flb	FileMaker Pro labels module
MacOS/FileMaker Templates	Template Information.fp5	Database containing descriptions of the template folder contents
	Templates	Folder containing predesigned templates that help you use FileMaker Pro right away
	Tips from Tech Support	Folder containing database of common scripted tasks and calculations

System Folder	File or folder	Description
Resources	FileMaker Help	Folder containing FileMaker Pro Help system
	FMApp.icns	Icon info for system
	FMDict.icns	Icon info for system
	FMDoc.icns	Icon info for system
	FMLabels.icns	Icon info for system
	FMLang.icns	Icon info for system
	FMNet.icns	Icon info for system
	FMplug.icns	Icon info for system
	FMPref.icns	Icon info for system
	FMTemp.icns	Icon info for system
	FMTheme.icns	Icon info for system
	FMTrans.icns	Icon info for system

User folder(s)

Mac OS X maintains separate preferences for each user account. FileMaker Pro maintains the following preferences for each user.

User folder/Library/Preferences/	File or folder	Description
FileMaker Preferences	FileMaker Pro 5.5 Prefs	FileMaker Pro preferences file
	FileMaker Hosts	FileMaker Pro Hosts file
	FileMaker Pro 5.5 Web Prefs	FileMaker Pro Web preferences file

Adjusting the FileMaker Pro cache

FileMaker Pro holds portions of your database in memory as you work. Depending on your computer's memory configuration, you might want to adjust the cache size to improve performance.

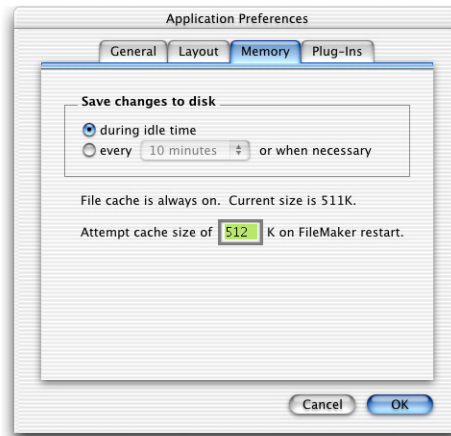
You may want to increase the cache size if you plan to:

- work on a large database file
- work on several database files at once
- host database files
- use a database file that contains many graphics
- insert a large graphic into a database file

Consider decreasing the cache size if you plan to run several applications at the same time and you have a limited amount of memory (RAM) installed.

To change the cache size that FileMaker Pro uses:

1. In FileMaker Pro, choose the FileMaker Pro application menu > Preferences > Application.
2. Click the Memory tab.



3. Type a number in the Attempt cache size of box.
4. Click OK.

The next time you start FileMaker Pro, the new cache size is used.

Using FileMaker Pro 5.5 in Mac OS X

FileMaker Pro 5.5 introduces native support for Mac OS X. Database files that are shared peer-to-peer from Mac OS X work as they normally do with all other supported platforms. However, you will find that some FileMaker Pro features operate differently under Mac OS X, as explained below.

Menu location changes

In Mac OS X, the About FileMaker Pro, Preferences, and Quit FileMaker Pro menu items are located under the FileMaker Pro application menu.



Keyboard command changes

Because Mac OS X reserves the keystrokes Command-M (Minimize) and Command-H (Hide), the keystrokes for the following FileMaker Pro commands have been changed for Mac OS X:

Command	Old keystrokes	New keystrokes
Print One	Command-Option-T	Command-Option-P
Lock	Command-H	Command-Option-H
Unlock	Command-Shift-H	Command-Option-Shift-H
Paste Merge Field	Command-M	Command-Option-M
Omit Record	Command-M	Command-T
Omit Multiple	Command-Shift-M	Command-Shift-T
Omit Checkbox (Find Mode)	Command-M	Command-T

Note The above changes apply only to FileMaker Pro 5.5 in Mac OS X.

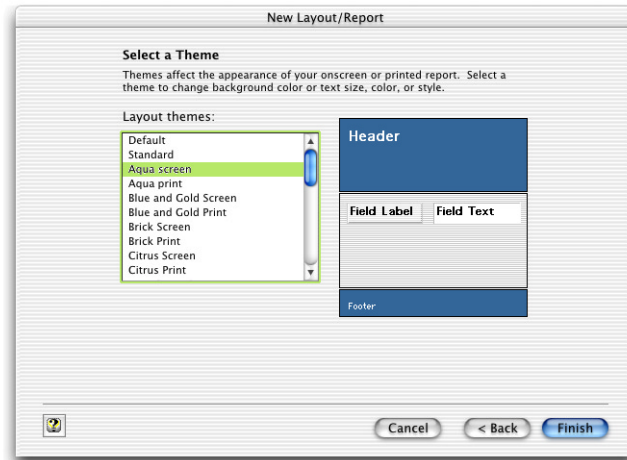
Switching between records, layout, and requests

To switch between records, layouts, and requests in Mac OS X, use Control-↑ and Control-↓.

FileMaker Pro has previously used Command-Tab and Shift-Command-Tab to move to the next (or previous) record, layout, or request in Browse, Layout, and Find modes. Both Mac OS 9.x and Mac OS X use Command-Tab and Shift-Command-Tab for switching between open applications. In Mac OS 9.x and earlier, you can change the configuration of Application Switcher to use different keyboard commands, making the Command-Tab and Shift-Command-Tab keystrokes available for FileMaker Pro to use. (For a description of how to make this change, see the Mac OS 9 Help topic, “Switching between open programs.”) However, in Mac OS X, you can’t change or disable these keyboard commands. Command-Tab and Shift-Command-Tab are not available as shortcuts in FileMaker Pro 5.5 in Mac OS X.

Design and functionality changes

There are new layout themes for using with the Aqua interface. (These themes are also available when you're running FileMaker Pro under Mac OS 9.x and earlier or in Windows.)



Status function changes

The following status functions have been changed for Mac OS X:

- Status(CurrentPrinterName) is not supported. This function returns <unknown> under Mac OS X.
- Status(CurrentPlatform) returns -1 under Mac OS X. In Mac OS 9.x and earlier, this function returns +1. Use ABS(Status(CurrentPlatform)) = 1 to check for any Macintosh operating system.

Features not supported in FileMaker Pro 5.5 for Mac OS X

- ODBC import
- Execute SQL script step
- Dial Phone script step
- Toolbars
- The AppleTalk network protocol for sharing files on Mac OS X
- The Send Mail script step with the Mac OS X Mail application

The Send Mail script step is supported using the following applications, which run in the Classic Mac environment:

- Microsoft Outlook Express 5.0v2
- Microsoft Entourage 2001
- Eudora 5

Features with different requirements

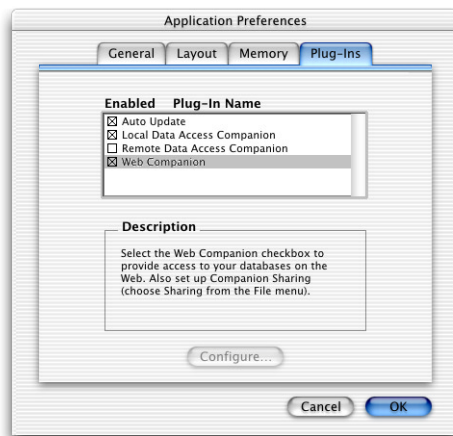
- Mac OS X requires QuickTime 5.0 or higher.
- Plug-ins used with FileMaker Pro 5.5 for Windows and Mac OS 9.x (and earlier) aren't compatible with FileMaker Pro for Mac OS X. You must use plug-ins specifically updated for Mac OS X. Conversely, plug-ins and filters written for FileMaker Pro 5.5 running under Mac OS X are not compatible with FileMaker Pro 5.5 running under other operating systems.

Enabling the FileMaker Pro Web Companion in Mac OS X

FileMaker Pro uses the FileMaker Pro Web Companion plug-in to serve databases over the Web.

To enable the Web Companion in Mac OS X:

1. Choose the FileMaker Pro application menu > Preferences > Application.
2. In the Application Preferences dialog, click the Plug-Ins tab.
3. Select the Web Companion checkbox.



After you enable the Web Companion, you must specify which *port*, or virtual connection, the Web Companion will use to publish data.

The first time you enable the Web Companion (or if you have previously enabled the Web Companion and are reinstalling FileMaker Pro), FileMaker Pro requests permission to make a one-time change to your computer's setting to facilitate web publishing on ports below 1024.



The standard port for web publishing is port number 80 (ports are numbered between 1 and 65535), and most web servers and browsers use this port as the default. Port 80 is also the default port for the FileMaker Pro Web Companion. For security reasons, Mac OS X restricts access to ports below 1024. To configure the FileMaker Pro Web Companion to use ports below 1024 while maintaining the Mac OS X access restrictions on these ports, it is necessary to make a one-time change to the file permissions of the Web Companion Enabler to give it the authority to open privileged ports (ports 1-1023). To make this change, you will need an administrator password, such as the password created when you first set up Mac OS X.

Note If you use a port other than port number 80 for FileMaker Pro web publishing, your users will need to append a colon (":") and the number of the port to their URLs to access your web hosted databases. For more information, see "Accessing databases that are published to the Web" on page 16 of this guide, and the FileMaker Pro Help topic, "Specifying a port number for web publishing."

4. If have an administrator password and want to configure the Web Companion to use standard settings for web publishing (recommended), click Continue.

If you do not have an administrator password, or do not want to enable the Web Companion at this time, click Cancel. The Web Companion will not be enabled, and your system settings will remain unchanged.

If you do not have an administrator password, or want to configure the Web Companion to use port 1024 or higher, click Advanced. Your system settings will remain unchanged. See the section "Configuring the Web Companion for use with ports 1024 and higher" for further instructions.

5. Enter an administrator name and password in the Authenticate dialog, and click OK.



The administrator name and password you enter can be the same as the name and password used when Mac OS X was installed, or if you have administrator privileges but do not know an administrator password, you can create a new user and password with administrator privileges. For more information on creating an account with administrator privileges, see the Mac OS X Help topics, “Working as an administrator,” and “Changing your password.”

You are finished. The Web Companion is configured to use port 80.

Configuring the Web Companion for use with ports 1024 and higher

You do not need an administrator password to configure the FileMaker Pro Web Companion to use ports 1024 and higher. Unlike ports below 1024, the FileMaker Pro Web Companion can use ports 1024 and above without altering your system’s settings.

Note If you have previously enabled the Web Companion to use ports below 1024 as described above, your system is already configured to allow the Web Companion to use any port. Make port changes directly in the Web Companion Configuration dialog.

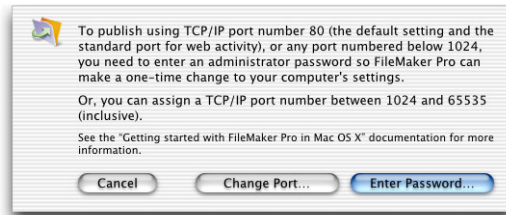
To configure the FileMaker Pro Web Companion to use only ports 1024 and above:

1. Choose the FileMaker Pro application menu > Preferences > Application.
2. In the Application Preferences dialog, click the Plug-Ins tab.
3. Select the Web Companion checkbox.

You see the following dialog.



4. Click Advanced.

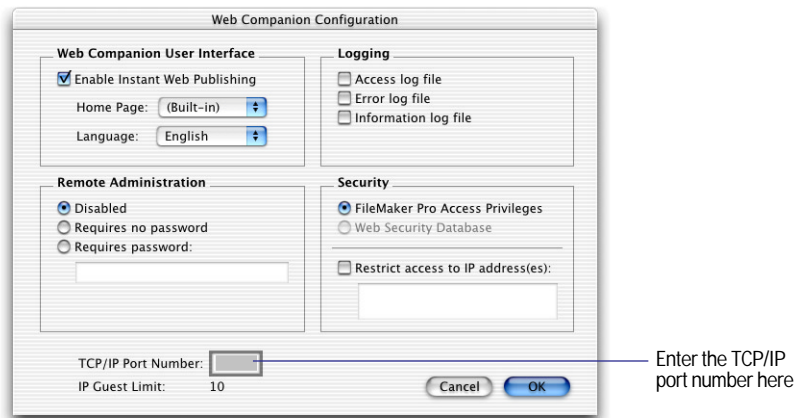


5. Click Change Port.

You see the Web Companion Configuration dialog.

Note If you click Enter Password in the above dialog, you are brought to the Authenticate dialog and asked to enter an administrator password to enable the use of ports below number 1024, as described in the previous section.

6. Enter a port number between 1024 and 65535 in the TCP/IP Port Number box.



7. Click OK to save your changes.

You are finished. The Web Companion is now configured to use the port you have specified.

Accessing databases that are published to the Web

When you publish a database to the Web, your users access that database by entering the host machine's URL in their web browser. If the FileMaker Pro Web Companion is configured to use port number 80, the default port, the URL your users will enter will look like this:

`http://12.34.56.78/`

The number “12.34.56.78” is an example; in its place, your users would enter the actual URL of your host machine.

If the FileMaker Pro Web Companion is configured to use a port number other than the default, the URL your users will enter will look like this:

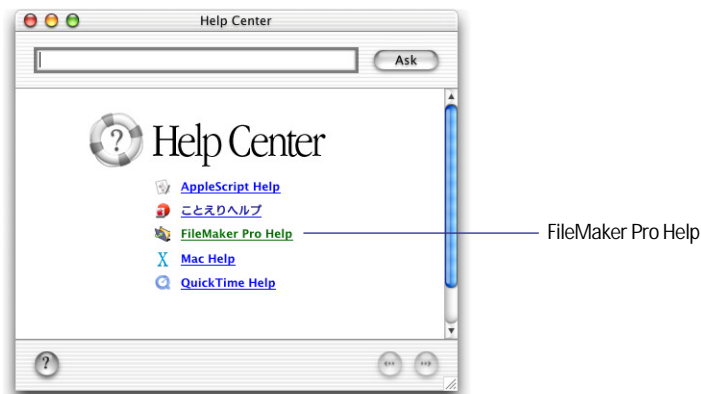
`http://12.34.56.78:1024`

Again, the number “12.34.56.78:1024” is an example; your users would enter the actual URL of the host machine, followed by a colon (“:”) and the port number specified in the FileMaker Pro Web Companion Configuration dialog.

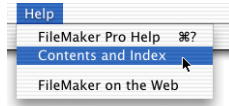
For more information on accessing FileMaker Pro databases on the Web, see chapter 14 of the *User's Guide*, “Publishing databases on the Web.”

Using FileMaker Pro 5.5 Help in Mac OS X

The information in FileMaker Pro 5.5 Help is the same in Windows, Mac OS 9.x or earlier, and Mac OS X. However, in Mac OS X, FileMaker Pro 5.5 Help is part of the Mac OS X Help Center.



To use FileMaker Pro 5.5 Help, choose it from the Help Center or from the Help menu in FileMaker Pro.



Choose an item from the table of contents or enter text you'd like to search for in the Ask box.

