

# Welcome to FileMaker Pro

---

Welcome to the FileMaker Pro application from Claris Corporation. FileMaker Pro is designed to help you manage information easily and effectively.

This installation guide, the *FileMaker Pro User's Guide*, and the onscreen Help system work together to give you the information you need to know as you learn about FileMaker Pro.

For a complete description of what's in the documentation set, see "Getting Help" in the *FileMaker Pro User's Guide*.

## About this guide

This *FileMaker Pro Installation & New Features Guide* includes instructions for installing the application on your hard disk.

- Chapter 1, "Installing FileMaker Pro," gives instructions for installing the application, registering your ownership, and everything else you need to do before you can use FileMaker Pro.
- Chapter 2, "New features in FileMaker Pro," provides an overview of the new features in FileMaker Pro 3.0. This chapter is especially helpful for users upgrading from previous versions of FileMaker Pro.

## Using this book

This guide presents special information in the following ways:

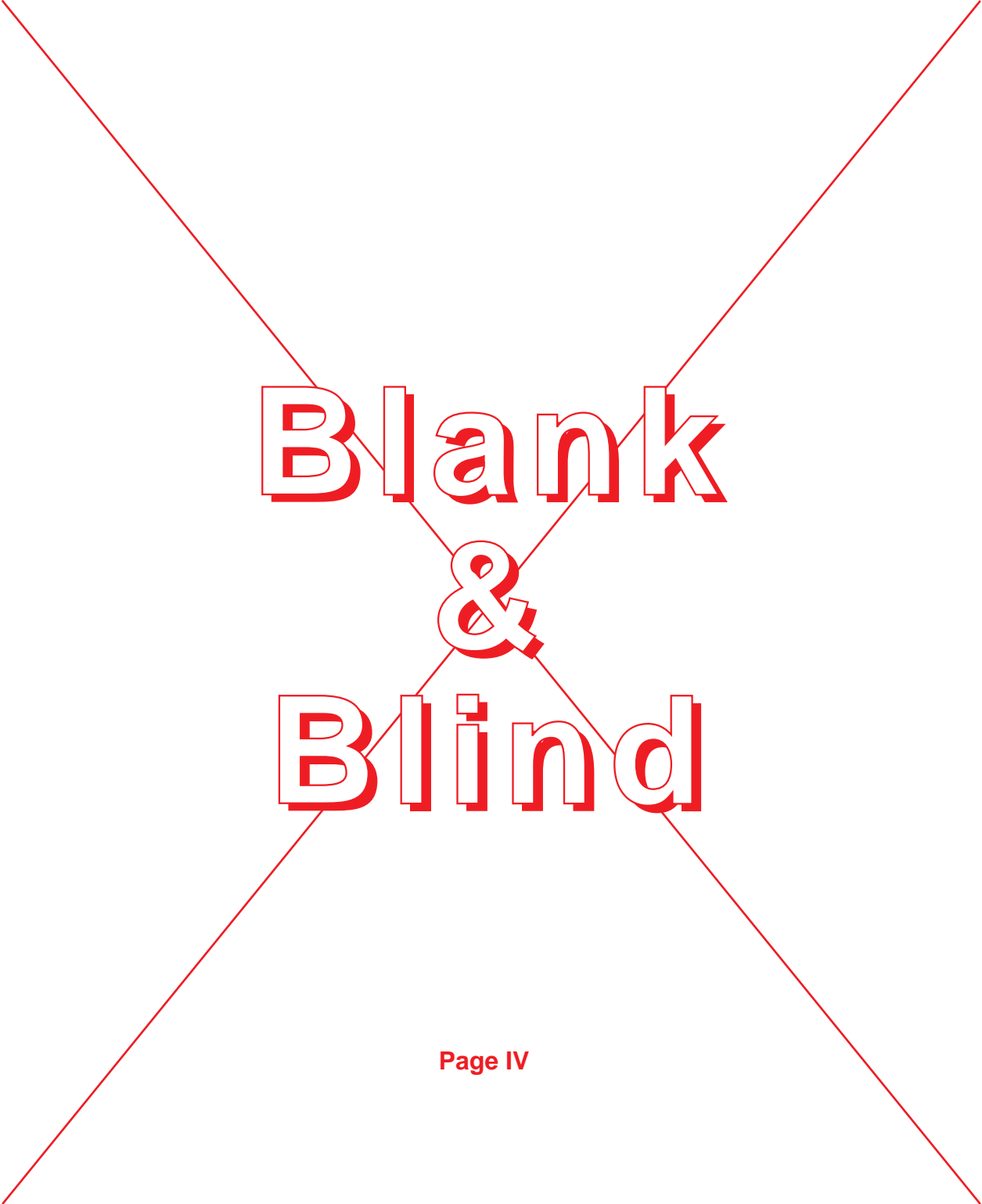
**Descriptive heading** messages give extra information about a procedure.

**Note** messages provide background or supplemental information.

**Important** messages alert you to situations that require special attention, such as an action that you can't undo.

## Getting customer support

To learn about Claris Technical Support and Claris Customer Assistance, their hours of operation, and their telephone numbers, see the *Claris Service Directory* included in the product package.



# **Blank & Blind**

# Chapter 1: Installing FileMaker Pro

---

This book gives you step-by-step instructions for installing FileMaker Pro software for Windows. In this chapter, you find the instructions for installing FileMaker Pro on your hard disk.

**Note** These instructions assume that you're familiar with standard mouse techniques such as clicking and dragging. If you need more information about mouse techniques or working with disks, see the documentation that came with your Windows software.

## What you need

Before you begin installing, you must know how you plan to use FileMaker Pro.

- On a stand-alone computer—you want to use FileMaker Pro on your computer, and you don't plan to share files with other users over a network.
- With networking—you want to use FileMaker Pro on your computer, and you plan to share FileMaker Pro files with other PCs using IPX/SPX or TCP/IP networking.

**Networks** If you're not sure which network you're using, ask your network administrator before you begin installation.

**Note** If you are new to Microsoft Windows 95, see the documentation provided with Windows 95 for information about Windows conventions and how to use the mouse and keyboard.

## PC minimum requirements

To install and use FileMaker Pro for Windows, you need the following minimum equipment and software:

- an Intel compatible 486/33 PC running Windows 95, Windows NT 3.51 or greater, Windows for Workgroups 3.11, or Windows 3.1
- 8 MB of RAM (16 MB recommended with Windows NT 3.51)
- a CD-ROM drive or a high-density 3.5-inch floppy disk drive
- a hard disk

**Windows 3.1 users** You must install Win32s 1.30c before installing FileMaker Pro. See "Installing Win32s" on page 1-2 for instructions.

## Networking requirements

To share files among users on a network, you need to have the following additional software and hardware installed on your PC:

- a Windows-compatible network card
- the software driver for your network card
- the appropriate IPX/SPX network protocol or TCP/IP network protocol for Windows 95, Windows NT, Windows for Workgroups, or Windows 3.1

**Note** FileMaker Pro 3.0v3 supports only IPX/SPX networking under Windows 3.1.

You can use one of the following solutions to share files on a PC or mixed MacOS computer and PC network. See the documentation that came with Windows or your network card for more information.

<b>Windows 95</b>	<b>Windows NT</b>	<b>Windows for Workgroups</b>	<b>Windows 3.1</b>	<b>MacOS</b>
IPX/SPX -compatible Protocol	NWLink IPX/SPX Compatible Transport	Novell NetWare Client Software Shell version 3.26 or later	IPX/SPX-compatible protocol	MacIPX version 1.2.1
TCP/IP	TCP/IP	MS TCP/IP-32 version 3.11b	Not supported	MacTCP 2.0.6 or later or Apple Open Transport 1.0.8 or later

## Before you begin

Before you begin the installation process, lock your FileMaker Pro disks. For the 3.5-inch disks, slide the tab in the upper-right corner of the disk so that the small “window” is open. The CD-ROM is already write-protected.

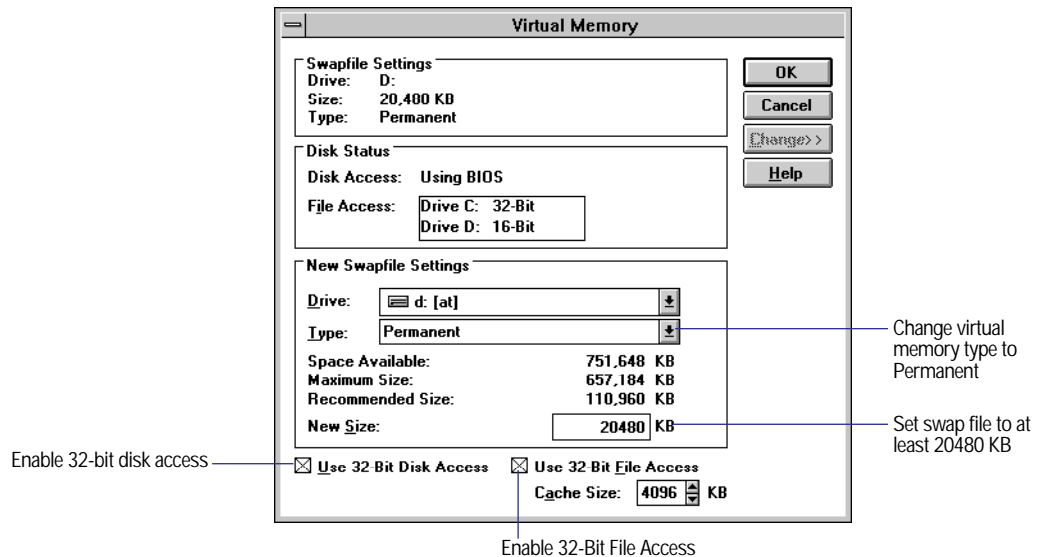
## Installing Win32s

If you are using Windows 3.1 or Windows for Workgroups 3.11, you need to install Win32s 1.30c before installing FileMaker Pro. If you have already installed Win32s version 1.30c or later, skip to “Installing FileMaker Pro” on page 1-4. After installing Win32s, you will still be able to run all the applications you currently use. If an earlier version of Win32s is installed on your system, you can use the following procedure to update it.

To install Win32s:

1. Open the 386 Enhanced control panel and change the virtual memory type to Permanent.
2. Make sure the swap file size is at least 20480 KB.
3. Select Use 32-Bit Disk Access and Use 32-Bit File Access, if available.
4. Click OK.

If you made changes, you'll need to restart Windows before installing Win32s.



5. Install Win32s.

Insert the Win32s Disk1. In the Program Manager, choose Run from the File menu and type `a: Setup.exe` from the Program Manager. Follow the Win32s setup instructions.

6. When the Win32s installation is complete, the Freecell Setup dialog box appears.

Claris recommends that you install and run the game Freecell, because it can help verify your Win32s software installation if a problem arises later.

7. Restart the machine before installing FileMaker Pro.

## Installing FileMaker Pro

You must use the installation program to install FileMaker Pro—you can't install FileMaker Pro by dragging files to your hard disk.

The CD-ROM contains information, such as additional templates and support information, not found in the disk set. The floppy disks are included as a convenience for users who do not have CD-ROM drives. If you have a CD-ROM drive, you should use the CD-ROM disc; you do not need to use the floppy disks.

**If you don't have a CD-ROM drive** The floppy disks included with FileMaker Pro 3.0 contain the application and all the files you need to start working.

**If you're on a network** You need to know which type of network you're using. If you're not sure which network option to choose, check with your network administrator before you begin installation.

### Installing with Windows 95

To install FileMaker Pro from the CD-ROM:

1. Insert the CD-ROM disc into the CD-ROM drive.
2. Follow the instructions provided on the screen.

**Important** Because the CD-ROM contains additional templates and other information not available on floppy disk, you should install from the floppy disks only if you do not have a CD-ROM drive.

To install FileMaker Pro from the floppy disks:

1. Start Windows 95.
2. Click the Start button and then point to Settings.
3. Click Control Panel.
4. Double-click Add/Remove Programs.



Add/Remove Programs

You see the Add/Remove Programs Properties dialog box.

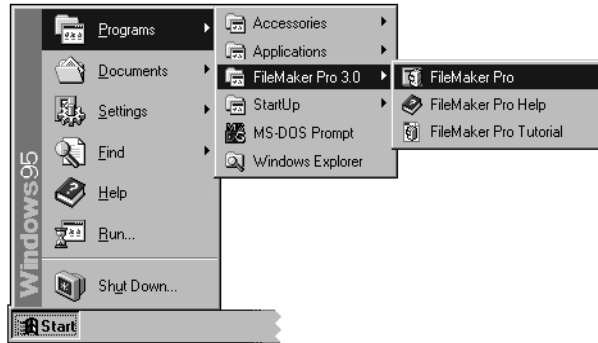


5. Click Install.
6. When you see the prompt, insert *Disk 1* into the floppy disk drive.
7. Click Next.

The installation program finds the setup file for FileMaker Pro (SETUP.EXE).

8. Click Finish.
9. Follow the installation instructions provided on the screen.

After the installation program copies all the files, it creates a menu item for FileMaker Pro in the Start menu.



Default location for the FileMaker Pro menu item in the Start menu

If you are using the IPX/SPX network protocol to host FileMaker Pro databases. To allow the maximum number of guests (25), your IPX/SPX connections must be set to 30 or greater. The FileMaker Pro Installer checks this setting and adjusts it automatically, if necessary, during installation.

## Installing with Windows NT, Windows for Workgroups, or Windows 3.1

**Important** You need to install Win32s before installing on Windows for Workgroups or Windows 3.1. “Installing Win32s” on page 1-2.

To install FileMaker Pro with Windows NT 3.51, Windows for Workgroups, or Windows 3.1:

1. Start Windows.
2. If you are installing from the CD-ROM, place the disc in the CD-ROM drive. If you are installing from floppy disks, insert *Disk 1* in the floppy disk drive.
3. Choose Run from the Program Manager’s File menu.
4. If you are installing from the CD-ROM, type the drive letter and the path of the setup command in the Command Line box (for example, d:\setup) and click OK.

If you are installing from 3.5-inch floppy disks, type the drive letter and then the setup command in the Command Line box (for example, a:\setup) and click OK.

5. Follow the installation instructions provided on the screen.



## Adjusting network software

Depending on the networking protocol you're using, you may have to modify settings on the host and/or guest computers.

**If you are using the IPX/SPX protocol with Windows 95,** you might need to increase the number of IPX/SPX connections. To allow the maximum number of guests (25), your IPX/SPX connections must be set to 40 or greater. The FileMaker Pro Installer checks this setting and adjusts it automatically, if necessary, during installation. Consider increasing the SPX connections in the Network control panel if you cannot connect the desired number of guests. You do not need to modify settings on Windows NT.

**If you are using the IPX/SPX network with Windows 3.1 or Windows for Workgroups 3.11,** you should use the Novell NetWare Client Shell version 3.26 or higher to share FileMaker Pro files. The FileMaker Pro Installer checks the IPX/SPX connections setting and adjusts it automatically.

**Important** FileMaker networking over IPX/SPX will not work if the Microsoft IPX/SPX compatible driver is installed.

**Note** You'll need to change Novell NetWare settings in order to network FileMaker Pro. To share FileMaker Pro files over the network, your machine must be a fully configured NetWare client.

To share FileMaker Pro database files:

- Use the Windows Setup program to set the network to the appropriate NetWare option (usually NetWare 3.26 and above).
- Add the following entries to your NET.CFG (or SHELL.CFG) file:

```
GET LOCAL TARGET STACKS=10
SPX CONNECTIONS=40
```

Get local target stacks needs to be set on all guest machines. SPX connections should be set on the host machine if it will host more than twelve guests or on guest machines using additional SPX applications. Consider increasing the SPX connections if you cannot connect the desired number of guests.

## Registering your software

Take a minute to register FileMaker Pro in one of the following ways:

- complete and mail the postage-paid product registration card
- call (800) 356-6657 to register by phone
- use the onscreen registration database by clicking the Register button in the New Database dialog box, which you see when you start FileMaker Pro. You can fax the completed registration card to Claris or send it by mail.

Keep the part of the registration card with your serial number on it in a safe place.

## Adjusting the FileMaker Pro cache

FileMaker Pro maintains an internal cache of portions of your database. Depending on your computer's memory configuration, you may want to adjust the cache size to improve performance.

You may want to consider increasing the cache size if you plan to:

- work on a large database file
- work on several database files at once
- host database files
- use a database file that contains many graphics
- insert a large graphic into a database file

You may want to consider decreasing the cache size if you plan to:

- run several applications at the same time and you have a limited amount of memory (RAM) installed

**Note** By changing the FileMaker Pro cache size, you also affect the amount of memory needed to run FileMaker Pro.

For more information on managing memory, see the documentation that came with your computer.

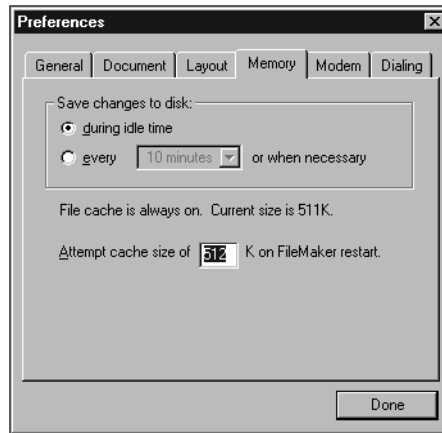
### Changing the cache size

To change the cache size FileMaker Pro uses:

1. In FileMaker Pro, choose Preferences from the Edit menu.

You see the Preferences dialog box.

2. Click the Memory tab at the top of the dialog box.



3. Type a number in the Attempt cache size of box.
4. Click Done.

The next time you start FileMaker Pro, the new cache size is used.

## Changing the network protocol

During installation, you chose a network protocol (or No Networking) for FileMaker Pro. You can change the network protocol at any time.

You must choose a network protocol if you want to share FileMaker Pro files over a network, either as a guest or as a host. For more information about your network, consult your network administrator.

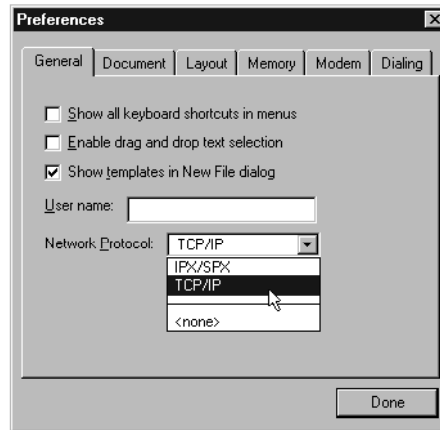
**Important** The network protocol setting in FileMaker Pro must be the same on the host and guest computers.

To change the network protocol:

1. Start FileMaker Pro 3.0.
2. Choose Preferences from the Edit menu.

You see the Preferences dialog box. If necessary, click the General tab to bring the General preferences to the front.

3. Choose a network protocol from the Network Protocol pop-up menu.



Changes to this setting don't take effect until you quit FileMaker Pro and then start it again.

## Opening files from previous versions

FileMaker Pro 3.0 can open both Windows and Macintosh files created by FileMaker Pro 2.0 or later.

[FileMaker Pro 1.0 databases](#) To use a database created by FileMaker Pro 1.0, you must first convert it on a Macintosh with version 2.0 or later and then open it in FileMaker Pro for Windows.

To use files created with FileMaker Pro 2.x, you must convert them to FileMaker Pro 3.0.

To convert and open a file:

1. Start FileMaker Pro 3.0.
2. Choose Open from the File menu and select the file you want to convert in the Open dialog box.

You see the conversion dialog box.

3. Type a name to rename the original file, or uncheck the Rename old file checkbox to retain the name of the file.



The original file remains in the older format.

After you click OK, you see another dialog box where you can name the file that will be created and saved in the new format. You cannot use the converted file with versions of FileMaker Pro earlier than 3.0.

4. Click Save to start the conversion.

FileMaker Pro converts the file and opens it.

## Where files are stored on your hard disk

The following table shows the files and folders you can install, and the preferred location for them on your hard disk. If you use the Typical installation, the FileMaker Pro Installer installs all the files you need in their preferred locations.

<b>File or folder</b>	<b>Description</b>	<b>Preferred location on Windows 95</b>	<b>Preferred location on Windows for Workgroups and Windows 3.1</b>
FILEMAKER PRO.EXE	Application file	FileMaker Pro 3.0 folder	\FMPro30
README.WRI	Text document about FileMaker Pro	FileMaker Pro 3.0 folder	\FMPro30
CLLNGENU.DLL	Claris Spelling engine module	FileMaker Pro 3.0 folder	\FMPro30
CLSPELL.DLL	Claris Spelling engine module	FileMaker Pro 3.0 folder	\FMPro30
FMENGINE.DLL	FileMaker application module	FileMaker Pro 3.0 folder	\FMPro30
FMOLE.DLL	FileMaker application module	FileMaker Pro 3.0 folder	\FMPro30
FMRSRC.DLL	FileMaker application module	FileMaker Pro 3.0 folder	\FMPro30
FMATM16.DLL	Support for Adobe Type Manager (Windows 95 only)	FileMaker Pro 3.0 folder	\FMPro30
FMATM32.DLL	Support for Adobe Type Manager (Windows 95 only)	FileMaker Pro 3.0 folder	\FMPro30

<b>File or folder</b>	<b>Description</b>	<b>Preferred location on Windows 95</b>	<b>Preferred location on Windows for Workgroups and Windows 3.1</b>
FMTOOLS.DLL	FileMaker application module	FileMaker Pro 3.0 folder	\FMPro30
FMPRO30.HLP	FileMaker Pro online help document	FileMaker Pro 3.0 folder	\FMPro30
TEMPLATE	Folder containing predesigned templates that help you use FileMaker Pro right away	FileMaker Pro 3.0 folder	\FMPro30
EXAMPLES	Folder containing database examples that use the relational capabilities of FileMaker Pro 3.0	FileMaker Pro 3.0 folder	\FMPro30
TUTORIAL.FP3	FileMaker Pro Tutorial database	Tutorial folder in the FileMaker Pro 3.0 folder	\FMPro30\Tutorial
FMIPX32.NET	IPX/SPX network plug-in	System folder in the FileMaker Pro 3.0 folder	\FMPro30\System
FMTCP32.NET	TCP/IP network plug-in	System folder in the FileMaker Pro 3.0 folder	\FMPro30\System
CWORKS.IMP	ClarisWorks Database translation filter	System folder in the FileMaker Pro 3.0 folder	\FMPro30\System
DBF.IMP	DBF Database translation filter	System folder in the FileMaker Pro 3.0 folder	\FMPro30\System
FMBMP32.FLT	BMP graphic filter	System folder in the FileMaker Pro 3.0 folder	\FMPro30\System
FMCGM32.FLT	CGM graphic filter	System folder in the FileMaker Pro 3.0 folder	\FMPro30\System
FMDRW32.FLT	DRW graphic filter	System folder in the FileMaker Pro 3.0 folder	\FMPro30\System
FMGIF32.FLT	GIF graphic filter	System folder in the FileMaker Pro 3.0 folder	\FMPro30\System
FMHPGL2.FLT	HPGL graphic filter	System folder in the FileMaker Pro 3.0 folder	\FMPro30\System
FMMAC32.FLT	MacPaint graphic filter	System folder in the FileMaker Pro 3.0 folder	\FMPro30\System
FMPCX32.FLT	PCX graphic filter	System folder in the FileMaker Pro 3.0 folder	\FMPro30\System
FMPIC32.FLT	PIC graphic filter	System folder in the FileMaker Pro 3.0 folder	\FMPro30\System
FMSLD32.FLT	Lotus SLD graphic filter	System folder in the FileMaker Pro 3.0 folder	\FMPro30\System
FMTIFF32.FLT	TIFF graphic filter	System folder in the FileMaker Pro 3.0 folder	\FMPro30\System

<b>File or folder</b>	<b>Description</b>	<b>Preferred location on Windows 95</b>	<b>Preferred location on Windows for Workgroups and Windows 3.1</b>
FMWMF32.FLT	Metafile graphic filter	System folder in the FileMaker Pro 3.0 folder	\FMPro30\System
CTL3d32.DLL	Windows 3-D interface	not applicable	\Windows\System
NWNETAPI.DLL	Novell Networking software	not applicable	\Windows\System
NWIPXSPX.DLL	Novell Networking software	not applicable	\Windows\System
FMIPX16.DLL	IPX network plug in module	not applicable	\FMPro30\System
FMCOMM16.DLL	FileMaker application module	not applicable	\FMPro30\System
FMCOMM32.DLL	FileMaker application module	not applicable	\FMPro30\System
USEENGLSH.MSP	The primary dictionary of 100,000 words that FileMaker Pro uses to spell check your files	Claris folder	\Windows\Claris
USER.USP	The dictionary that stores your customized list of spelling exceptions and additions to the US English - Spelling dictionary	Claris folder	\Windows\Claris

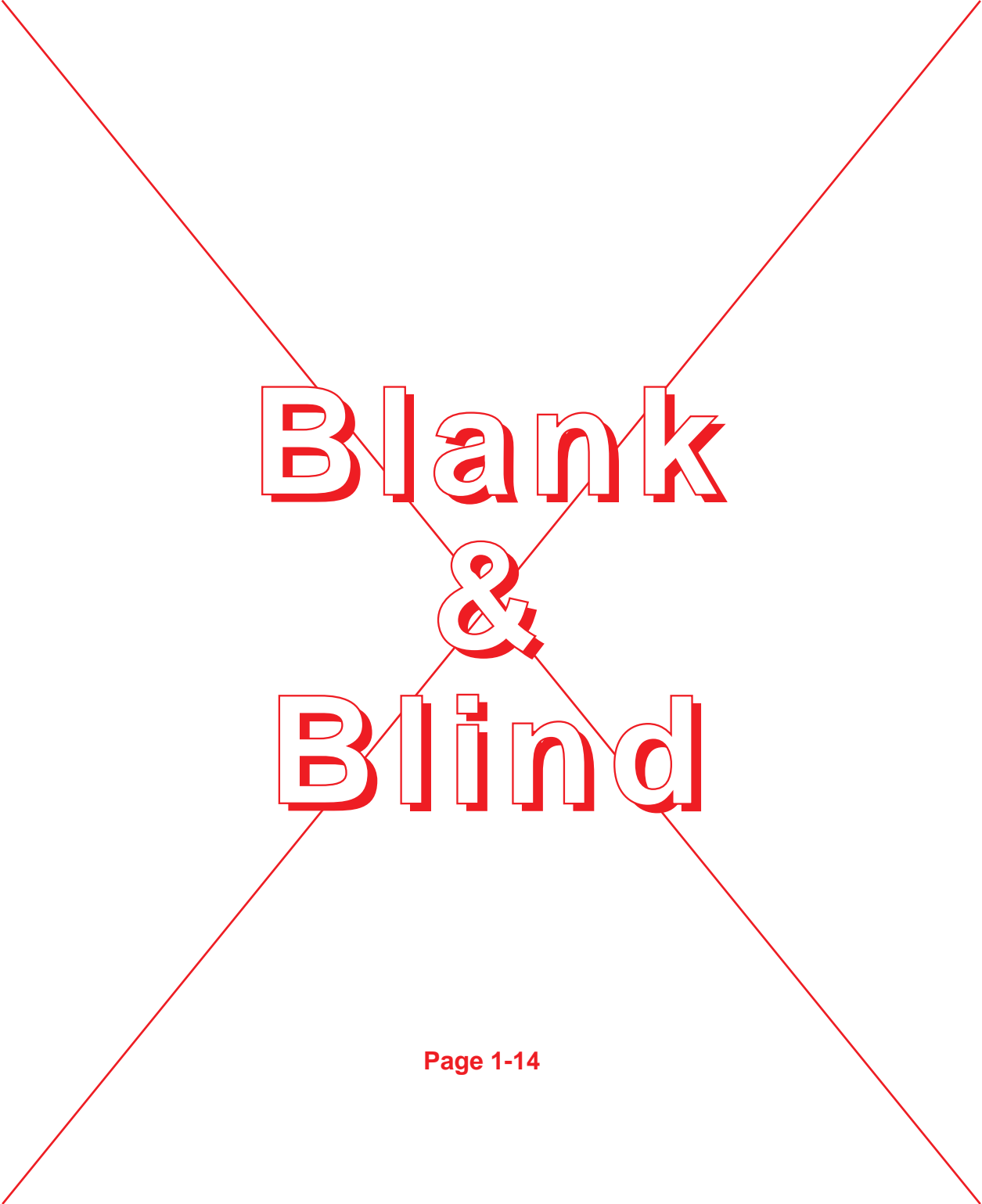
[Location of the FileMaker Pro 3.0 folder](#) In Windows 95, the FileMaker Pro folder is located by default in the Claris Corp folder in the Program Files folder. In Windows NT, Windows for Workgroups, and Windows 3.1, the FileMaker Pro directory is located by default in the root directory.

[Location of the Claris folder](#) In Windows 95, the Claris folder is located by default in the Claris Corp folder in the Program Files folder. In Windows NT, Windows for Workgroups, or Windows 3.1, the Claris directory is located in the Windows directory. If a Claris directory exists from a previous installation of a Claris product, the existing location is used.

## Where to go from here

After you install FileMaker Pro, you can immediately begin working with the application. Here are some suggestions on where to go in the documentation to get started:

- If you're new to databases, read chapter 1, "FileMaker Pro basics," in the *FileMaker Pro User's Guide* to learn basic database concepts.
- If you're new to FileMaker Pro, work through the online tutorial, which is automatically copied to your hard disk when you do a typical installation.
- If you've used FileMaker Pro before, read chapter 2 of this manual to find out about the new features available in FileMaker Pro 3.0.



# **Blank & Blind**



## Chapter 2: New features in FileMaker Pro

This chapter introduces the new features available in FileMaker Pro 3.0.

### Relational database capability

FileMaker Pro 3.0 supports relational features that you can use to display the contents of a field from another database file. You can display records from the related file in a layout of the current file.

A *relational database* is one or more discrete database files that contain all the data you need to do your work. In a relational database, each occurrence of data is stored in only one file at a time, but you can access and work with that data from any file.

Customers			
Cust ID: 601			
Name	EW Travel		
Address	88 Liberty		
City	Groton		
State	MA		
Invoices			
1002	\$320.00	1/27/95	
1005	\$125.00	2/19/95	
1007	\$378.50	3/5/95	

1st Quarter 1995 Invoices			
Inv #	Cust ID	Customer	Total
1000	590	Sushi Corp	\$450.00
1001	432	Computer Sys	\$540.00
1002	601	EW Travel	\$320.00
1003	432	Computer Sys	\$35.50
1004	102	Acme Paint Co.	\$240.00
1005	601	EW Travel	\$125.00
1006	590	Sushi Corp	\$156.00
1007	601	EW Travel	\$378.50
1008	432	Computer Sys	\$450.00
1009	102	Acme Paint Co.	\$270.00
1010	590	Sushi Corp	\$93.40

In this relational database, the Customer layout displays invoices from the Invoices file. The two files are related by the Cust ID field.

For more information about relational databases, see chapter 10, “Using data from related files,” in the *FileMaker Pro User’s Guide*.

### Object linking and embedding (OLE)

Now you can use OLE 2.0 with FileMaker Pro. Using OLE, you can combine information from other applications with information in FileMaker Pro files. You can also use drag and drop to move objects between files.

You can store an OLE object in a container field or place it on a layout. If the OLE server supports editing, you can edit the OLE object in FileMaker Pro.

For more information about using OLE with FileMaker Pro, see appendix D, “Linking and embedding objects,” in the *FileMaker Pro User’s Guide*.

## Improved networking

You can now use the Preferences dialog box to choose the network protocol that FileMaker Pro uses to communicate over a network. For more information about setting this preference, see “Choosing a network protocol” in chapter 1 of this manual.

FileMaker Pro now ships with TCP/IP support for Macintosh and Windows. For more information about networking, see chapter 1, “Installing FileMaker Pro,” in this manual.

FileMaker Pro 3.0 can be used with FileMaker Pro Server 3.0 for enhanced performance and to allow up to 100 guests to share databases. FileMaker Pro Server 3.0 supports simultaneous AppleTalk, IPX/SPX, and TCP/IP networking with both Macintosh and Windows guests. Guests can use the protocol of their choice to network with FileMaker Pro. (AppleTalk networking is not available for Windows guests.) For more information, see the documentation provided with FileMaker Pro Server 3.0 (available separately).

## Enhanced calculations

The enhanced user interface for defining calculations gives you easy access to more than 45 new and improved functions. In addition, you control when FileMaker Pro calculates the results, saving space in the database file. For more information about calculations, see “Understanding formulas” in chapter 2 of the *FileMaker Pro User’s Guide*.

## ScriptMaker enhancements

With the new script steps available in the ScriptMaker feature, you can:

- control script execution (create If/Else and looping procedures, allow user abort, capture script errors)
- manage windows (freeze or refresh windows, toggle or lock the status area, set the zoom level)
- manage data entry (paste the result of a calculation, set the contents of a field, perform a replace, revert the contents of a record)
- dial phone numbers
- show messages to the user
- go to a related record or portal row
- open the Preferences dialog box

- correct a word while spell checking
- set spelling options, such as check spelling while you type
- change your spell checking dictionaries
- modify your User Dictionary
- specify which portal row record to delete
- and much more...

Scripts can now be executed when a file is opened and/or when a file is closed. You can use the Duplicate button to quickly duplicate scripts or script steps.

For more information about using ScriptMaker, see chapter 5, “Using ScriptMaker and buttons,” in the *FileMaker Pro User’s Guide*.

## Browse and Find mode improvements

You can now revert changes after you modify a record or a find request.

You can save space in a database file by storing graphics by reference. With this feature, you can store a graphic once but display it in many places throughout the database.

FileMaker Pro now supports and works with empty found sets.

You can replace a field’s contents with other text, serial numbers, or a calculation result.

For more information about these features, see chapter 4, “Working with information in records,” in the *FileMaker Pro User’s Guide*.

## Text editing enhancements

Additional text editing features allow you to:

- insert tabs in fields and text objects
- use a new text ruler to format text in fields and text objects
- specify paragraph margins, indentation, and spacing above and below a paragraph (in addition to line spacing)
- format text in text objects or fields on a paragraph-by-paragraph basis

For more information about working with text and graphics on a layout, see chapter 3, “Laying out and arranging information,” in the *FileMaker Pro User’s Guide*.

## Field definition improvements

With the new options for field definitions, you can:

- use global fields to show the same value in every record
- validate data entry by calculation or a value list
- auto-enter a value from the previous record or based on the result of a calculation
- specify a custom validation message

In addition, you can define new storage options for text, number, date, time, and calculation fields. You can specify:

- whether FileMaker Pro should always index the field, index the field when required, or never index the field
- what language to use for indexing text
- whether to store a calculated value or to calculate the value when it is required

For more information, see “Choosing data entry options” in chapter 2 of the *FileMaker Pro User’s Guide*.

## More flexibility with value lists

Value lists are no longer attached to specific fields. This change means that one value list can be shared by several fields. In addition, you can base a value list on the contents of a field.

You can now edit a value list:

- during data entry
- during layout design, even over a network

For more information, see “Defining value lists” in chapter 3 of the *FileMaker Pro User’s Guide*.

## New options in Layout mode

New features in Layout mode allow you to:

- insert the contents of a field into a text object on a layout using merge fields
- define buttons more easily using a new button tool
- edit the text within buttons or groups without having to ungroup or undefine the button

- remove a layout from the Layout pop-up menu that appears in Browse mode
- work with additional zoom levels
- set custom page margins for your layouts
- use a new context pop-up menu to edit a selection in both Layout and Browse modes

Sample data in Layout mode now comes from your own records, so you can design your layouts more accurately.

Label layout creation has been simplified. The new interface avoids the need to use sliding.

For more information about layouts, see chapter 3, “Laying out and arranging information,” in the *FileMaker Pro User’s Guide*.

## More powerful file handling

FileMaker Pro file sizes are no longer limited to 32 MB. In addition, you can now have up to 50 database files open at the same time. For more information, see “Managing files” in chapter 1 of the *FileMaker Pro User’s Guide*.

## Automatic database creation

FileMaker Pro can automatically create a new FileMaker Pro database from a file created in another application. Simply open a file (such as a tab-separated text file) in FileMaker Pro, and a new database file is automatically created, containing the fields from the original file, a Standard layout and a Columnar report layout, and the data. For more information, see “Importing data into a new file” in chapter 8 of the *FileMaker Pro User’s Guide*.

## Expanded import and export

New import and export features allow you to:

- import and export in additional file formats
- create field definitions while setting up an import
- apply auto-entry options while importing data

For more information about importing and exporting, see chapter 8, “Importing and exporting data,” in the *FileMaker Pro User’s Guide*,

## New ways to limit user access

You can disable all or most of the menus using new access privileges, and you can disable the status area using ScriptMaker. For more information see chapter 7, “Networking and access privileges,” and chapter 5, “Using ScriptMaker and buttons,” in the *FileMaker Pro User’s Guide*.