



# FileMaker®

## Installation and New Features Guide

*for FileMaker Pro 8.5 and FileMaker Pro 8.5 Advanced*

© 2005-2006 FileMaker, Inc. All Rights Reserved.

FileMaker, Inc.  
5201 Patrick Henry Drive  
Santa Clara, California 95054

FileMaker is a trademark of FileMaker, Inc., registered in the U.S. and other countries, and ScriptMaker and the file folder logo are trademarks of FileMaker, Inc. All other trademarks are the property of their respective owners.

FileMaker documentation is copyrighted. You are not authorized to make additional copies or distribute this documentation without written permission from FileMaker. You may use this documentation solely with a valid licensed copy of FileMaker software.

All persons and companies listed in the examples are purely fictitious and any resemblance to existing persons and companies is purely coincidental.

Credits are listed in the Acknowledgements document provided with this software.

For more information, visit our website at [www.filemaker.com](http://www.filemaker.com).

Edition: 01

# Contents

## Chapter 1

### ***Before you begin***

About this guide	5
Registration and customer support	5
About the license key	5
Hardware and software requirements	6
Networking requirements	6
Web publishing requirements	6
Requirements for other features (Windows)	7
Requirements for other features (Mac OS)	7
Features not supported in Mac OS X	7
Features not supported in Windows	7
ACL file permissions	7
Opening files from previous versions	7
Updating your User Dictionary	7
Automating your installation	7

## Chapter 2

### ***Installing FileMaker Pro in Windows***

Installation notes	9
Installing FileMaker Pro	9
Installing FileMaker Pro from the command line	10
Where files are stored on your hard disk	10
Uninstalling, modifying, or repairing FileMaker Pro	10
Changing the FileMaker Pro cache size	10
Where to go from here	11

## Chapter 3

### ***Installing FileMaker Pro in the Mac OS***

Installation notes	13
Installing FileMaker Pro	13
Where files are stored on your hard disk	13
Installing ODBC client drivers in Mac OS X	14
Adjusting the FileMaker Pro cache	14
Where to go from here	14

## Chapter 4

### ***New features***

New features in FileMaker Pro 8.5	17
New features in FileMaker Pro 8.5 Advanced	17



# Chapter 1

## *Before you begin*

Welcome to your FileMaker® software. FileMaker is designed to help you manage information easily and effectively.

### ***About this guide***

This *Installation and New Features Guide* tells you how to install FileMaker Pro 8.5 or FileMaker Pro 8.5 Advanced on your Windows or Mac OS computer and introduces new features in the software.

**Note** This guide uses “FileMaker Pro” to refer to both FileMaker Pro and FileMaker Pro Advanced, unless describing specific FileMaker Pro Advanced features.

The *FileMaker Pro User’s Guide* provides essential information to get you working productively right away. If you’ve never used FileMaker Pro, work through the *FileMaker Pro Tutorial* to try out the major features. For details and comprehensive, step-by-step procedures, see FileMaker Pro Help.

The *FileMaker Pro Advanced Development Guide* describes additional features available in FileMaker Pro Advanced, including features such as customizing menus; copying and importing tables; Database Design Reports; field, variable, and expression monitoring using the Data Viewer; and adding tooltips.

**Note** When a feature or procedure is specific to a particular platform, you see instructions and illustrations that are also specific to that platform. For features or procedures that are similar on both platforms, you may see illustrations for either Windows or the Mac OS.

### ***Registration and customer support***

Please take the time to register your product during installation, through the FileMaker website at [www.filemaker.com/register](http://www.filemaker.com/register), or by choosing Help menu > Register Now in FileMaker Pro.

For information about technical support and customer service, see:

[www.filemaker.com](http://www.filemaker.com) (North American customers)

[www.filemaker.com/intl](http://www.filemaker.com/intl) (customers outside North America)

To access resources on the FileMaker website such as ready-made solutions and the FileMaker Knowledge Base, choose Help menu > Learning Center.

If you do not have access to the web, please refer to the FileMaker Service Directory that comes with your software. North American customers can also call (800) 965-9090 to learn about the service options available.

### ***About the license key***

FileMaker software comes with a unique, 35-digit alphanumeric license key. Do not lose this license key; it cannot be replaced. We recommend that you keep the license key in a safe place in case the software ever needs to be reinstalled.

You can find your 35-digit alphanumeric license key(s) on the back of the CD sleeve or in the FileMaker Service Directory that comes with your software. You must enter the license key during installation or the software will not install.

The license key ensures adherence to the single user license agreement, which generally allows for use of one (1) copy of the Software on a single computer at a time (refer to your Software License). If the license key is invalid or if another copy of the application installed with that same license key is running on the network, the FileMaker Pro application displays this error message: “The maximum number of licensed users are currently using this copy of FileMaker Pro. Please refer to the License Key section of your software documentation for further instructions.”

If you receive this error message, you have entered a duplicate license key. To install FileMaker Pro on multiple computers, you must have a unique license key for each user, or obtain a volume license. You must license one copy of FileMaker Pro for each computer.

## ***Hardware and software requirements***

To install and use FileMaker Pro, you need the CD-ROM in the FileMaker Pro package and the following minimum equipment and software:

### **Windows requirements**

- Pentium III 500 MHz or faster
- 256 MB RAM
- Windows 2000 SP4, Windows XP SP2
- a CD or DVD drive
- SVGA (800x600) or higher resolution video adapter and display

### **Mac OS requirements**

- Macintosh computer with PowerPC G3, G4, or G5 processor or Intel-based Macintosh computer
- 256 MB RAM
- Mac OS X version 10.3.9 with PowerPC processor
- Mac OS X version 10.4.5 with PowerPC processor or Intel processor

- a CD or DVD drive
- QuickTime 6.4 to 7 software (available at [www.apple.com](http://www.apple.com) if it was not included with your Mac OS version)

### **Important note about supported operating systems**

At the time this book was written, FileMaker, Inc. tested FileMaker Pro 8.5 with the Windows and Mac OS operating systems listed above. FileMaker Pro may or may not work with newer operating system releases. For information on newer operating systems, see [www.filemaker.com](http://www.filemaker.com).

### ***Networking requirements***

If you plan to share FileMaker Pro files with other computers on a network, you need to know which type of network you’re using. FileMaker Pro 8.5 supports the TCP/IP network protocol.

If you’re not sure which network protocol is installed and in use on your computer, check with your network administrator before you begin installation.

To connect to a network, your computer must also have a network card and the required software.

### ***Web publishing requirements***

To publish a database on the web using FileMaker Pro Instant Web Publishing, you need a host computer with access to the Internet or an intranet via TCP/IP.

**Important** Access to the Internet requires an Internet service provider (ISP). FileMaker Pro does not provide an Internet account for you.

## Requirements for other features (Windows)

Some of the features of FileMaker Pro for Windows require additional software.

Feature	Software requirement
Send Mail script step	A Mail API (MAPI) enabled email client software
Phone dialing	Phone dialer or other Telephony API (TAPI) compliant software
ODBC features	Microsoft Data Access Components (MDAC) version 2.6, 2.7, or 2.8. To update MDAC software, use Microsoft Windows Update or see the Microsoft website at <a href="http://www.microsoft.com">www.microsoft.com</a> . For more information on using ODBC, see <a href="http://www.filemaker.com/odbc">www.filemaker.com/odbc</a> .
Insert QuickTime movie and image files	QuickTime 6 software (available at <a href="http://www.apple.com">www.apple.com</a> )

## Requirements for other features (Mac OS)

Some of the features of FileMaker Pro for Mac OS X require additional software.

Feature	Software requirement
Send Mail script step	Microsoft Entourage or Mac OS X Mail email client software

## Features not supported in Mac OS X

In Mac OS X, FileMaker Pro does not support the Dial Phone, Insert Object, Send DDE Execute, and Update Link script steps.

## Features not supported in Windows

In Windows, FileMaker Pro does not support the Perform AppleScript and Speak script steps.

## ACL file permissions

You must disable Access Control Lists in order to install the product. After installing, do not use ACL file permissions to control access to any FileMaker file. For more information, see the documentation that came with your operating system software.

## Opening files from previous versions

FileMaker Pro 8.5 can open files created in earlier versions of FileMaker Pro. See the *FileMaker Pro User's Guide* for information.

## Updating your User Dictionary

If you added words to a User Dictionary in a previous version of FileMaker Pro, you may want to use it with FileMaker Pro 8.5. See the *FileMaker Pro User's Guide* for information about converting a User Dictionary.

## Automating your installation

If you're installing multiple copies of FileMaker Pro under a volume license, you can automate the process using the Assisted Install.txt file on the FileMaker Pro CD, which lets you bypass the normal install dialog boxes. For more information, see the *Network Install Setup for FileMaker Pro and FileMaker Pro Advanced* guide. For information on volume licensing, see [www.filemaker.com](http://www.filemaker.com).





# Chapter 2

## *Installing FileMaker Pro in Windows*

Before you begin the installation process, exit other open programs and save your work. For late-breaking information about FileMaker Pro, browse the contents of the CD and view the Read Me file or visit [www.filemaker.com](http://www.filemaker.com).

### *Installation notes*

Before you install FileMaker Pro, review the following notes:

- If you installed a trial version of FileMaker Pro 8.5, you must remove it before installation. Use the Add or Remove Programs control panel to remove the trial version.
  - If your computer is running virus protection software, turn it off prior to installing FileMaker Pro, and then turn it back on afterwards.
  - When you are installing FileMaker Pro, you will see the License Agreement panel. Read the Software License Agreement. If you accept the terms of the license agreement, click **I accept...**, then click **Next**.
  - By default, FileMaker Pro will be installed in this folder:  
C:/Program Files/FileMaker/FileMaker Pro 8.5  
During installation, you can choose another drive or another folder.
  - By default, FileMaker Pro Advanced will be installed in this folder:  
C:/Program Files/FileMaker/FileMaker Pro 8.5 Advanced  
During installation, you can choose another drive or another folder.
  - During installation, you can choose whether to install all program features (**Complete**), or to install only selected portions of the program (**Custom**). For example, you may choose not to install certain features in order to save disk space.
- At the start of installation, you choose a language version for the FileMaker Pro application. The default selection matches your operating system language. A Complete install will install only the language version you choose. You can install additional language versions by choosing Custom install, then selecting other language packs from the list of supported languages.
  - Confirm that your user account permits you to install software.

### *Installing FileMaker Pro*

You must use the installation program to install FileMaker Pro—you can't install FileMaker Pro by dragging files to your hard disk.

If you want to create an install log file that lists the registry entries and path of all installed files, you must install FileMaker Pro from the command line. See “Installing FileMaker Pro from the command line” on page 10.

To install FileMaker Pro on your hard disk:

1. Insert the CD into your CD or DVD drive.

The FileMaker CD window appears.

2. Click the Install icon.



The FileMaker Pro InstallShield Wizard appears.

3. Install FileMaker Pro by following the on-screen instructions.

For details about installation issues, see “Installation notes” on page 9.

4. When the installation is complete, click Finish.

When installation completes, you see a Product Registration panel. You can register online if you have an Internet connection. If you choose to register by letter or by fax, you can fill out the form on your computer, print a copy of the form, and mail or fax it to FileMaker.

### ***Installing FileMaker Pro from the command line***

To install FileMaker Pro from the command line and create an installation log file:

1. Insert the CD into your CD or DVD drive.
2. Open a command window.
3. In the command window, type
4. Follow the on-screen instructions.

```
E:\Files\setup.exe /v"/Lr C:\FMP8.5InstallLog.txt"
```

The FMP8.5InstallLog.txt file will be located on the C drive of your hard disk. You can view it with WordPad or a word processing program.

**Note** If your CD or DVD drive is not located at drive E, then substitute the correct letter for your drive.

### ***Where files are stored on your hard disk***

The FileMaker Pro installer copies files to several folders on your hard disk, depending on the installation options you choose and your operating system. If you performed a command line installation and specified an install log file, you can view the install log file, which lists the location of each installed file.

## ***Uninstalling, modifying, or repairing FileMaker Pro***

You can use the Windows Add or Remove Programs control panel to uninstall FileMaker Pro, replace missing or corrupt files, or to change which features are installed. For more information about using Add or Remove Programs, refer to Windows Help.

**Note** Uninstalling doesn't delete files that you've created, as long as they are named differently than the sample and template (Starter Solution) files that are installed with FileMaker Pro.

When you modify or repair FileMaker Pro, you may be prompted to enter your license key.

## ***Changing the FileMaker Pro cache size***

FileMaker Pro maintains an internal cache of portions of your database. Depending on your computer's memory configuration, you may want to adjust the cache size to improve performance.

You may want to consider increasing the cache size if you plan to:

- work on a large database file
- work on several database files at once
- host database files
- use a database file that contains many graphics
- insert a large graphic into a database file

Consider decreasing the cache size if you plan to run several applications at the same time and you have a limited amount of memory (RAM) installed.

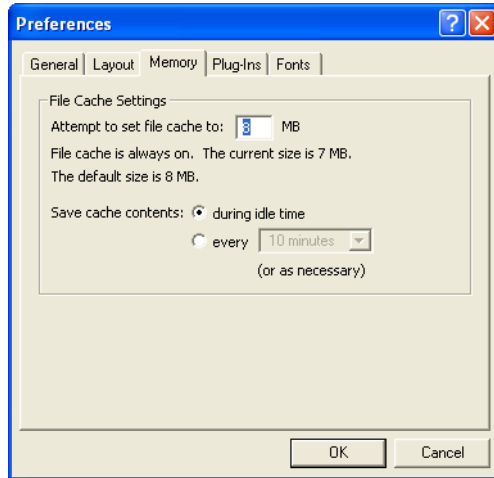
**Note** When you increase or decrease the FileMaker Pro cache size, you also increase or decrease the amount of memory needed to run FileMaker Pro.

For more information on managing memory, see the documentation that came with your computer.

To change the cache size that FileMaker Pro uses:

1. In FileMaker Pro, choose Edit menu > Preferences.

The Preferences dialog box appears.



2. Click the Memory tab.
3. Type a number in the Attempt to set file cache to box.
4. Click OK.

The next time you start FileMaker Pro, the new cache size is used.

## Where to go from here

After you install FileMaker Pro, you can immediately begin working with the application. Here are some suggestions on where to go in the documentation to get started:

- If you're new to databases, read chapter 1, "Using databases" and chapter 2, "Creating databases" in the *FileMaker Pro User's Guide* to learn basic database concepts.
- If you're new to FileMaker Pro, work through the lessons in the *FileMaker Pro Tutorial*. The PDF file and sample files for the tutorial are located in the Tutorial folder inside the English Extras folder.
- If you've used FileMaker Pro before, read chapter 4, "New features" in this guide for an overview of new features available in FileMaker Pro 8.5 and FileMaker Pro 8.5 Advanced.
- If you're a FileMaker Pro Advanced user, see the *FileMaker Pro Advanced Development Guide* for information on FileMaker Pro Advanced features.



# Chapter 3

## *Installing FileMaker Pro in the Mac OS*

Before you begin the installation process, quit other open programs and save your work. For late-breaking information about FileMaker Pro, browse the contents of the CD and view the Read Me file or visit [www.filemaker.com](http://www.filemaker.com).

### *Installation notes*

Before you install FileMaker Pro, review the following notes:

- If you installed a trial version of FileMaker Pro 8.5, you must remove it before installation. To remove the trial version, drag the FileMaker Pro 8.5 folder and the FileMaker Pro 8.5 preferences file to the Trash. The FileMaker Pro 8.5 preferences file is in [home folder]/Library/Preferences/FileMaker Preferences/FileMaker Pro 8.5 Prefs.
- If your computer is running virus protection software, turn it off prior to installing FileMaker Pro, and then turn it back on afterwards.
- When you are installing FileMaker Pro, you will see the License Agreement panel. Read the Software License Agreement. If you accept the terms of the license agreement, click **Accept**.
- During installation, you can choose whether to install all the program files (an **Easy Install**), or to install portions of the program (a **Custom Install**). For example, you may choose not to install certain features in order to save disk space.
- An Easy Install installs FileMaker Pro in the language matching your operating system. You can install additional language versions by choosing Custom install, then selecting other language packs from the list of supported languages.

### *Installing FileMaker Pro*

You must use the installation program to install FileMaker Pro—you can't install FileMaker Pro by dragging files to your hard disk.

To install FileMaker Pro on your hard disk:

1. Insert the CD into your CD or DVD drive.

You see the disc's window on your screen. If you see only the disc icon, double-click the CD icon to open its window.

2. Locate and double-click the FileMaker Pro 8.5 icon.



FileMaker Pro 8.5

3. Install FileMaker Pro by following the on-screen instructions.

When installation completes, you see a Product Registration dialog box. You can register online if you have an Internet connection. If you choose to register by letter or by fax, you can fill out the form on your computer, print a copy of the form, and mail or fax it to FileMaker.

4. Click **Quit** to leave the Installer.

### *Where files are stored on your hard disk*

The FileMaker Pro installer copies files to several folders on your hard disk, depending on the installation options you choose and your operating system. When installation is complete, you can view the Installer Log File in the FileMaker Pro 8.5 folder. The log file lists the location of each installed file. You can view it with TextEdit or a word processing program.

## Installing ODBC client drivers in Mac OS X

FileMaker Pro ODBC support allows you to interact with data from other applications, such as Oracle databases, on your computer or over a network. For more information on using ODBC, including links to driver vendors, see [www.filemaker.com/odbc](http://www.filemaker.com/odbc).

## Adjusting the FileMaker Pro cache

Because Mac OS X dynamically allocates memory to applications as needed, there is no way to set a specific amount of memory to allocate to the FileMaker Pro application. However, you can adjust the FileMaker Pro cache size.

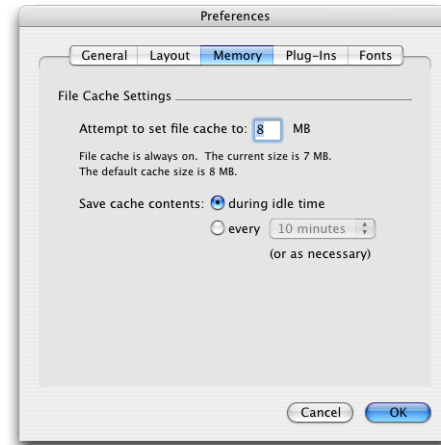
You may want to increase the cache size if you plan to do any of the following:

- work on a large database file
- work on several database files at once
- host database files
- use a database file that contains many graphics
- insert a large graphic into a database file

Consider decreasing the cache size if you plan to run several applications at the same time and you have a limited amount of memory (RAM) installed.

To change the cache size that FileMaker Pro uses:

1. In FileMaker Pro, choose the FileMaker Pro menu > Preferences and click the Memory tab.



2. Type a number in the Attempt to set file cache size to box.
3. Click OK.

The next time you start FileMaker Pro, the new cache size is used.

## Where to go from here

After you install FileMaker Pro, you can immediately begin working with the application. Here are some suggestions on where to go in the documentation to get started:

- If you're new to databases, read chapter 1, "Using databases" and chapter 2, "Creating databases" in the *FileMaker Pro User's Guide* to learn basic database concepts.
- If you're new to FileMaker Pro, work through the lessons in the *FileMaker Pro Tutorial*. The PDF file and sample files for the tutorial are located in the Tutorial folder inside the English Extras folder.

- If you've used FileMaker Pro before, read chapter 4, "New features" in this guide for an overview of new features available in FileMaker Pro 8.5 and FileMaker Pro 8.5 Advanced.
- If you're a FileMaker Pro Advanced user, see the *FileMaker Pro Advanced Development Guide* for information on FileMaker Pro Advanced features.





# Chapter 4

## New features

This chapter provides you with an overview of the new features and improvements in FileMaker Pro 8.5 and FileMaker Pro 8.5 Advanced.

### New features in FileMaker Pro 8.5

For more information on this feature	See
Using web viewers to access websites such as FedEx <sup>®</sup> or Google <sup>™</sup> from a layout	Help
New Set Web Viewer script step to control web viewers	Help
Web Viewer Example database with sample records and data to show you how you can use web viewers. Note that you must have an Internet connection to use this database.	FileMaker Pro 8.5/ English Extras/ Examples/Web Viewer Example folder
Web page with resources for web viewers	<a href="http://www.filemaker.com/web_viewer">www.filemaker.com/ web_viewer</a>
Assigning names to layout objects (such as buttons, portals, and tabs in a tab panel) using the Info palette (formerly known as the Size palette)	Help
New Go to Object script step to navigate to a named object	Help
New List function to return the concatenation of all non-blank values in list form using one field or multiple fields	Help
New LayoutObjectName function to return a list of all the named layout objects in a specified layout	Help
New Get(ActiveLayoutObjectName) function to return the name of the layout object in the calculation's active window	Help
New GetLayoutObjectAttribute function to return the requested attributes of the specified layout object in the calculation's active window	Help

For more information on this feature	See
New GetAsURLEncoded function to return the specified text in a text expression or text field as URL encoding, for use as a URL	Help
Enhancements to the RelationInfo function	Help
Re-sort indexed values based on the sort order for a specified language	Help

### New features in FileMaker Pro 8.5 Advanced

For more information on this feature	See
Enhanced Database Design Report, including properties for new features in FileMaker Pro 8.5	<i>Database Design Report XML Output Grammar</i> PDF, available on <a href="http://www.filemaker.com/downloads">www.filemaker.com/ downloads</a>
Updated example plug-in and API for XCode 2.2 that work on either PowerPC-based or Intel-based Macintosh computers	FileMaker Pro 8.5 Advanced ReadMe

**Note** Web viewers are supported in the runtime application.

